

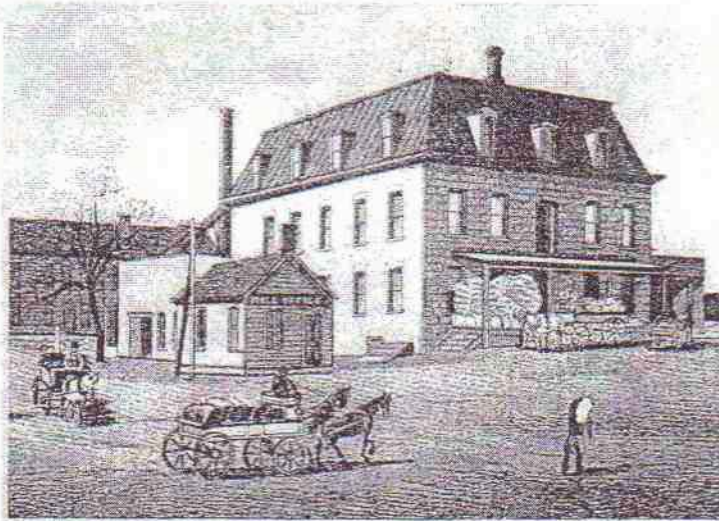
Adrian
Derouen

The New Steam Mill

Another Important Manufacturing Interest
Seven Run of Burrs
Magnificence Machinery and Splendid Appointments.
H.D. Crane & Co.

[*"Ottawa Weekly Republican," 17 Nov 1881*]

Last Wednesday morning the first cloud of black smoke poured forth from the monster pipe of the new steam flouring mill of H. D. Crane & Co. in this city, and the heavy, but elegant machinery creaked out its greeting to the farmers of Franklin county, as one of the most important manufacturing interests in Ottawa. This splendid enterprise was begun last spring by Messrs. H. D. Crane, John B. Shaffer and O. K. Ilginfritz, all men of abundant means, and two of them at least with a large and extensive milling experience. During the summer Mr. Ilginfritz, died, and his interest was taken by the other partners, and the work vigorously pushed forward during he summer until its completion this fall. The

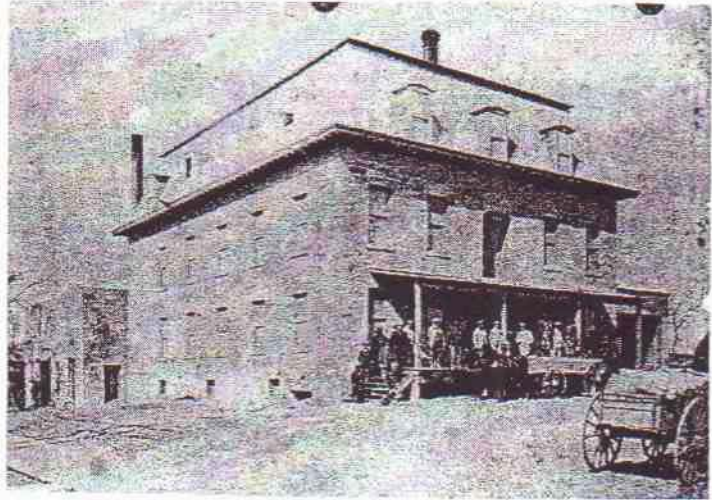


H.D. CRANE & CO'S MILL.

mil itself is a magnificent structure, built of heavy blocks of lime-stone with a mansard roof, and contains a basement, burr floor, bolting floor and attic. The main building is 50 x 65, fronting east, with a porch on this end and a covered driveway on the south side 12 x 65, containing platform scales which connect with the weighting yards in the office, situated in the northeast corner. The engine room, fronting south and attached to the west end of

the main building is 36 x 46, with a covered porch on the north end containing a sloping or incline floor, reaching from the west door of the mill down to the side track from the railroad, which has been put in by the firm. The engine room is paved or floored with 8x8 brick, and the boiler room with huge blocks of lime stone from the quarries at Winfield, Cowley county, Ks. All the walls are of stone, laid on a basement foundation 3 feet thick and 2 feet high. The basement walls are 28 inches thick and balance of walls 24 inches.

The basement is 11 feet high, the grinding or burr story 12 feet, the bolting story 15 feet and the attic 22 feet. The floor of the basement is grouted and cemented, being water and rat proof. The boiler room and engine rooms are divided by a 16 inch stone wall and every part peculiarly adapted for the purpose for which these rooms are used. The floor in the grinding story is of matched white oak and the balance of the floors are of hard pine. All the floors are supported by 12x12 inch girders and posts resting on grouted foundation 3x3 feet square and running successively to the attic floor. All joists are 3x12, an unusually large size, and the whole is surmounted with a fine mansard roof with Porter iron frame, and sheeted with fence flooring. IN the driveway on the north side are the corn dump and wheat hoppers for receiving the grain from wagons, connected with a bin which will hold about 500 bushels. The main storage bin is built of heavy scantling, and runs from the basement to the top of the mill, subdivided into six bins, with a capacity of 2,000 bushels each, or a total of 12,000 bushels. The stone work of this mill was done



by Soney Pierson, and is a fine example of perfect stonework. The carpenter work was done by Mr. M. V. Isham, who has proven himself a splendid workman. The lumber was bought of R. McDonald & Co., Kansas City, and the hardware of Swift & Topping of this city.

The milling machinery was put in by Nordyke, Marmon & Co., of Indianapolis, Ind., who are among the best milling machinists in the country. The works consist of an Atlas, Corliss engine, of the most modern and improved pattern, ninety-five horse power; the boilers 14x36 feet in size, and tubular twins of the latest and best make. On the basement floor are the corn-sheller pit, a Victor sheller, a Barnhard & Leas Warehouse Dustless Separator, corn cleaner, and driving apparatus for seven run of burrs, and a Nordyke, Marmon & Co. feed mill. In the engine room annex is also the well, 23 feet deep and nine feet in the clear. ON the next, or burr floor, are the seven run of burrs, six 5x3 ½ feet and one 24 inch stone; each set on a brick foundation, with iron hurst frames; each independent, and so connected with the heavy shafting us to run independently. Here also is the Eureka Flour Packer, which packs fro half sack to a barrel, and the weighing or portable scales at hand. The spouting from the drive way passes in through this floor with sliding openings for examining wheat, and connect with the wheat-sinks below. The large Fairbank's scales, the weighing beams of which are above, are located in this room, and have capacity of 500 bushels or 30,00 lbs.